

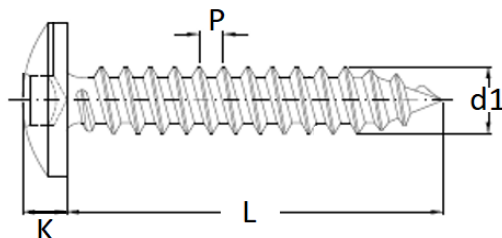
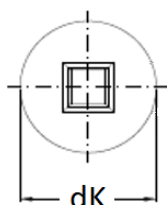
Vite autofilettante a testa cilindrica bombata con cava quadra
tipo C (punta conica)

Square socket pan head tapping screws, type C (cone point)

Disponibile/Available



A2



$P^1)$		1,4	1,4	1,6
d_k	max. = nom.size	7,5	8,2	9,5
	min.	7,14	7,84	9,14
k	max. = nom.size	2,8	3,05	3,55
	min.	2,55	2,75	3,25
Square socket N°		2		
L/d1		ST3,9	ST4,2	ST4,8
9,5				4,8x9,5
13		3,9x13		4,8x13
16		3,9x16	4,2x16	4,8x16
19			4,2x19	4,8x19
25		3,9x25		4,8x25
32		3,9x32	4,2x32	4,8x32
38			4,2x38	4,8x38
45			4,2x45	4,8x45
50			4,2x50	4,8x50
60				4,8x60
70				4,8x70
80				4,8x80
100				4,8x100
120				4,8x120

¹⁾ $P=$ è il passo del filetto / $P=$ is the pitch of the thread.